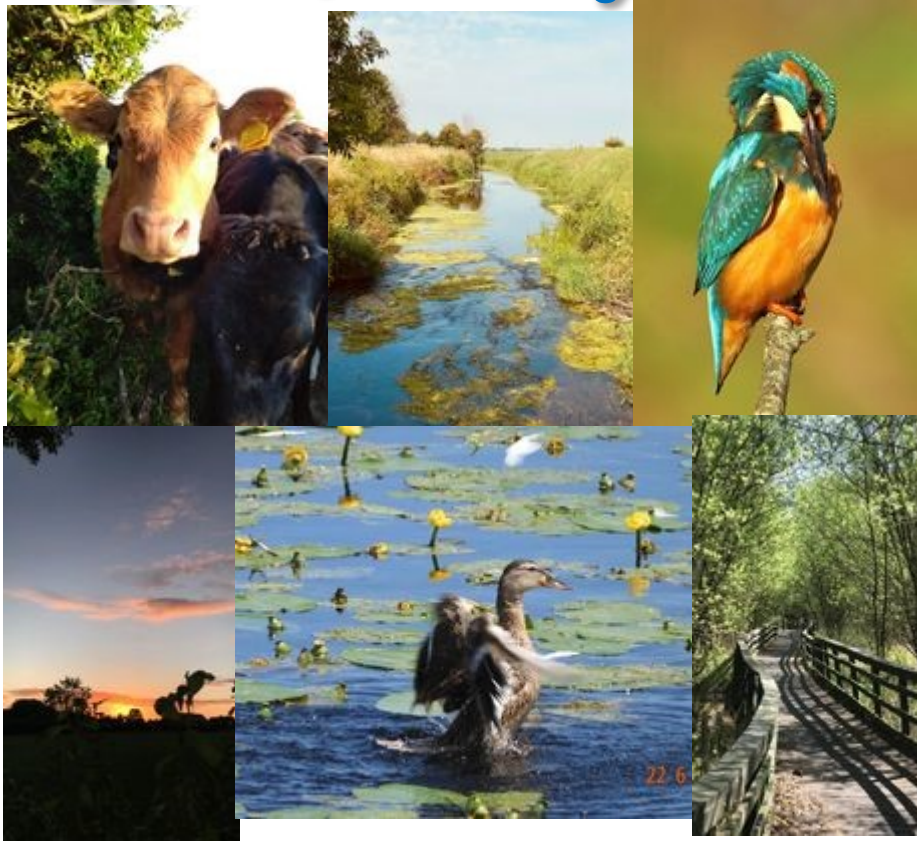


Meare and Westhay Village News April / May 2024



Photos by Calley Roxane Victoria, Amy Louise Woods, Graeme Conduit, Lexie Porter, Lyn Davidage and Becky Jenkins



Facebook: [Meare and Westhay News](#)

Website: www.meare-pc.gov.uk

A.S. GREENTER & SON

MOTOR ENGINEERS

MEARE

**Nr. GLASTONBURY
SOMERSET BA6 9SP**

Tel: Meare Heath 860237

Domestic Electrician

**Fully Qualified
Fault detection
Rewiring
Lighting alterations
Extra sockets added
Advice given**

**ian05@fiscali.co.uk
Please phone for quotation
(an 01749 890769 or 07908 941076)**

M Franks & Sons

Independent Family Funeral Directors

Bath Road, Ashcott, Bridgwater,
Somerset, TA7 9QT

* Private Chapel of Rest *
* 24 Hour Personal Service *

Telephone: (01458) 210627 or (01458) 860157
Email: mfranksandsons@gmail.com
Website: www.mfranksandsons.co.uk

SWEET ACRE NURSERY LTD

Suppliers of a large range of
Bedding and Hanging Basket plants
Large Selection of Shrubs and
Perennials, Pots and Compost

Open 7 days a week
Tel 01458834602
Godney Road, Glastonbury BA6 9AF



4 Star Bed and
Breakfast
Accommodation

MEARE MANOR

**60 St. Mary's Road
Meare BA6 9SR**

01458 860449

reception@mearemanor.co.uk

SUTTONS STAIRLIFTS LTD



STAIRLIFTS

NEW from £1,745

RECONDITIONED from £1,045

RENTAL from £55 per month

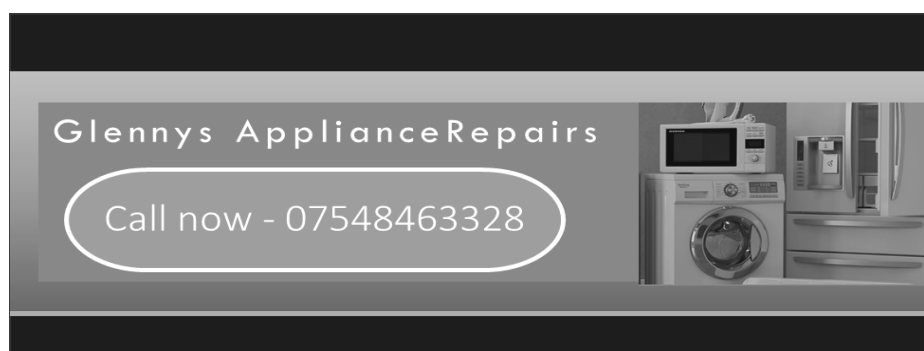
01749 346 900

www.suttonsstairlifts.co.uk

The Works, Shepton Mallet, Somerset. BA4 5DX

Table of Content

Editors News	4
Would like to mention.....	5
St Margaret Hospice Glorious Gardens	6
Meare & Westhay Fundraising Team	6
Charity Stamp Collection	6
Diary of Events	8 / 9
Announcements	10
Meare Community Church	11
Westhay School Rooms	11
Westhay Moor Peat Restoration Project	12
Bell Ringers	13
Clerks Report	16 / 17
Village Hall Committee	19
Ladies Group	19
Parking at Westhay Moor Nature Reserve	21
St. Mary's Church	21
Halls, Meeting Places & Allotments	23
Useful Contact Details.....	24
Parish Council Contact information	24
Bus Timetable	25
Magazine Dates & Contact Information	26



Glennys Appliance Repairs

Call now - 07548463328

Editors News

Happy Easter Everyone! Don't forget It's time to nominate the villager of the year, see Clerk report for details.

I read in an article that Hinkley point C, when it's operational, will suck in an Olympic sized swimming pool of water every 12 seconds for the next 70 years, from the Severn Estuary to cool the system. The water intake will trap and kill between 18 to 46 tonnes of fish in a year. They say its "less than the annual catch of one small fishing vessel". They quoted this online as if it was not an important amount. I do not understand how in this day and age they cannot stop fish from entering the system. Rant over!

While thinking of Easter, I wondered why the date changes every year and why is it called Easter. So I found the following information. It is believed the Word Easter comes from the Saxon spring festival *Ēostre*.

Ash Wednesday signals the 40-day period leading up to Easter, called Lent, when observants typically "give up" some earthly pleasure (wine, chocolate, sugar) as a form of penance. This stems from the bible, it says Christ spent 40 days in the wilderness. Because Ash Wednesday kicks off the Lenten season, its date is always exactly 46 days before Easter and thus is affected directly by what date Easter falls on that year.

Easter, which is said to celebrate Christ's resurrection from the grave following his crucifixion, can occur any Sunday between March 22 and April 25. Easter's exact date varies so much because it actually depends on the moon. It is set to coincide with the first Sunday after the **Paschal Full Moon, the first full moon after the vernal equinox**. Early Christians wanted Easter to coincide with Passover, because Christ's death and resurrection happened after the Jewish holiday. Because the Jewish calendar is tied to solar and lunar cycles, the dates of Passover and Easter fluctuate each year.

The Easter bunny, originally called "Oschter Haws," or Easter Hare, who lays a nest of colourful eggs for well-behaved children, hails from Germany. The earliest known mention, according to *A Dictionary of English Folklore*, is a German text from 1572.

Would Like to Mention

Keep Warm by Muriel Baker

At a Keep Warm Lunch in Meare, a group of senior citizens were sitting around talking about their ailments

My arms are so weak I can hardly lift my cup of coffee said one. Yes I know my cataracts are so bad I can't see my coffee replies another. I can't turn my head because of the arthritis in my neck said a third. To which several nodded weakly in agreement

My blood pressure pills make me dizzy another went on. I guess that's the price we pay for getting old, wined an old man as he slowly shook his head.

Then there was a short moment of silence. Well it's not that bad said one woman cheerfully, thank god we are all still alive!

Somerset Wildlife Trust

Somerset Wildlife Trust are delighted to share they are taking part in the new Blue Influencers Scheme, funded by The Ernest Cook Trust and the #iwill Fund. This scheme focuses on young people aged between 10 and 14 and is all about encouraging youth-led actions to improve the environment in and around our coasts and rivers. For more information about The Ernest Cook Trust's Blue Influencers Scheme visit <https://ernestcooktrust.org.uk/what-we-do/green-influencers-scheme/>.

Grass cutting in the Meare Graveyard.

Now that the mowing season has started could old wreaths, pots and plastic flowers please be cleared away or removed safely to the headstone plinths and not left on the grass. Thank you.

Prepare for the Growing season ahead.

At the Red Brick Community Garden, Family Session on Tuesday 2nd April. 10-12, Wildlife planting. Composting & Soil Health, Tuesday 16th April. 10-12. Wildlife Garden, Tuesday 30th April. 10-12. Containers & Companions, Tuesday 14th May. 10-12. Workshops are free to attend. To book & further information please contact: julia@feedavalon.org.uk

St Margarets Hospice Glorious Gardens

Our Glorious Gardens Season commenced at the end of March, with a variety of gardens and village opening across the county, details available on www.st-margarets-hospice.org.uk/glorious-gardens. Proceeds support our essential 24-hour care, available free of charge to anyone facing life limiting illness in Somerset.

Taking part in our Glorious Gardens Season by volunteering to help on a garden open day, donating plants for sale, or offering a raffle prize, we would be delighted to hear from you. In 2025 the hospice is celebrating its Sapphire Anniversary, having served the community for 45 years. We hope to commemorate this milestone by having 45 gardens taking part in the season, so if you have a lovely garden or interesting space that our supporters would enjoy visiting, please get in touch – perfection not required, weeds welcome!

All gardens are covered by St Margarets Public Liability Insurance. We look forward to hearing from you at online on our website or by phone on 01935 709485.



Meare & Westhay Fundraising Team



Don't forget to check the diary for the date of the MWFT Breakfast & 100 Club Draw dates for 2024. Pop along and meet your neighbours.

Charity Stamp Collection

Sands is a Stillborn and neonatal death charity, supporting anyone affected by the death of a baby and promotes research to reduce the loss of babies lives.

I'm collecting postage stamps in aid of the charity Sands. A charity close to our hearts. Please start collecting stamps, they need to have 1cm board around the stamp so they can have the best value for money. Please pop them in the Stamp post box in the Community Church and I will collect them from there.

Once they have all been collected I will send them off and they will email me, to let me know how much we have raise. Thank you, Victoria Lawrence

Scruffs2crufts



For an appointment call Denise on 07903864264
Located in Meare, I am a Qualified level 3 dog
groomer. Fully insured, 1-1 service, no cages



ROB MAHER

Painter & Decorator
City & Guilds Qualified
Extensive Experience ~ Interior & Exterior

FOR A FREE ESTIMATE CALL

Mobile: 07745599522 Evenings: 01749 671853

ELECTRICIAN

A BISGROVE ELECTRICAL LTD

- Domestic
- Industrial
- Commercial



07814 547092

andrewbisgrove1@hotmail.com

M. & P. CONTRACTING SERVICES

GRASS MOWING • HOUSE CLEANING SERVICES
LANDSCAPING, GARDENING and MAINTENANCE
EXCAVATOR and FORK LIFT DRIVING

PHONE MALCOLM OR PATSY FOR DETAILS
07792 160 760 / 07779 287 144
OR **01458 860001** TO LEAVE A MESSAGE

PARISH DIARY OF EVENTS		
Every Sunday	11 am	Community Church Morning Service
Every Monday	9:30 - 10:30	Community Church, Mother, Toddler & Baby Group
Every Monday	11:00 -13:00	Community Church, Chapel Café
Every Monday	13:00	Ladies Bible Study
Every Monday	19:00	Bingo the Railway
Every Monday	14:00	Community Church, Tea For 1 (Bereaved Cafe)
Every Thurs.	18:00 & 19:00	Square One Pilates, Meare Church Room, Ring Julie 07803332245
Every Friday	9:30 -12:30	Post Office, in Meare Church Room, Also 10 till 11:30 sit, chat and drink .
A P R I L		
Wed. 3rd	19:30	Acoustic Music, The Bird, Westhay
Friday 5th	6:00	Recycling & Refuse Bin Collection
Saturday 6th	10:30	Café Westhay
Sunday 7th	11:00	Holy Communion St. Mary's
Monday 11th	19:30	Council Meeting, Community Church
Wed 10th	14:00	Afternoon Tea in the Church rooms
Wed 10th	6:00	Garden Waste only Bin collection
Thurs 11th	6:00	Recycling Bin Collection
Mon 15th	19:30 -21:00	Council Meeting, Community Church
Thurs 18th	19:30	Ladies Group AGM & Bingo
Thurs 18th	6:00	Recycling Bin Collection
Sunday 21st	9:00 -11:00	MWFT Lazy Sunday Breakfast
Wed 24th	6:00	Garden Waste only Bin collection
Wed 24th	19:30	Quiz for Air Ambulance, The Bird
Thurs 25th	6:00	Recycling & Refuse Bin Collection
Saturday 27th	19:00	MPAG presents Miss Jam Tart at Glas-tonbury Football Club

Sunday 28th	10:00	Joint Benefice service and AGM at St Benedict's Church Glastonbury
M A Y		
Wed 1st	19:30	Acoustic music, The Bird Westhay
Thurs 2nd	6:00	Recycling Bin Collection
Saturday 4th	10:30	Westhay Schoolroom Coffee Morning
Sunday 5th	13:00 -16:00	The Railway Inn Live Music and BBQ
Sunday 5th	11:00	HC at St. Mary's
Thurs 9th	6:00	Garden Waste only Bin collection
Friday 10th	6:00	Recycling Bin Collection
Thurs 16th	6:00	Recycling & Refuse Bin Collection
Thurs 16th	19:30	Ladies Group Talk by Air Ambulance, at Community Church
Sunday 19th	09:00 - 11:00	MWFT Lazy Sunday Breakfast
Monday 20th	19:30 – 21:00	Parish Council Meeting, Community Church
Wed 22nd	6:00	Garden Waste only Bin collection
Thurs 22rd	6:00	Recycling Bin Collection
Sunday 26th	10:00	The Railway Inn, Charity Tractor Run, for info Call Ivan 07891939055 or Facebook page
Friday 31st	6:00	Recycling Bin Collection

Meare Youth – FREE event for 10 – 18 year olds on Saturday 11th May in the Church rooms.

Games and Signup for the Youth Group

Have your chance to say what you want....

This is for YOU to decide what you would like the money raised last year, to be spent on. Save the date and pop along between 11- 2pm for pizza and soft drinks (no charge).

Death Announcements

Farewell to the 'Queen of Cheesecakes'

After a long and very complex illness, **Carol Brown** finally succumbed in early February. We'll all miss Carol but nobody more than her husband Shane and their two dogs Dexter and Loki.

Everyone who knew Carol will recognise that 'Queen of Cheesecakes' as no trivial epithet, one that would certainly bring a smile and a twinkle to her eye. Those who had the joy of spending time with Carol will know her sense of humour, fun and zest for life, one who'd never allow her condition to spoil any event. She kept her role as secretary for the Ladies Club running for as long as she could possibly manage. Incredibly well organised in everything she did, Carol was utterly determined to get out of hospital to spend time at home, selflessly organising her own affairs in the most amazing and, dare I say, brave manner.



The Carol few of us knew was a confident pillion rider on Shane's various motorbikes and one who loved SCUBA diving. As well as her gift for producing the most meticulously made desserts, Carol also enjoyed her dressmaking, both hobbies showing her attention to detail in everything she undertook.

Speaking as a close friend to both, Shane did the best anyone could possibly do for his wife of 40 years and was rightly praised by the medical staff for his caring attention. ***Fred Giles***

Barbara (Cox Fox) Robinson, Late of Meare, known to many. Passed away in **January**. Her cremation took place on 19th February 2024.

Dennis Raymond Withers, Aged 80 years of Westhay, passed away suddenly on 3rd February 2024. Funeral service was held at Sedgemoor Crematorium on 5th March. Donations for Cancer research. Funeral directors were M Franks & Sons.

Meare Community Church

As I sit to write this message, the snowdrops are just starting to peep their heads out of the winter soil. Daffodils are up and the crocuses are sharing their white, yellow and purple colours. It reminded me of the promise of Spring and Summer to come, but God wants us to appreciate the season we are in right now. We all like to have things to look forward to - that holiday, party or reunion perhaps, but we should also take time to enjoy the present. God's presence, power, goodness and blessings can be felt in the here and now if we stop and meditate on His word. This is the day the Lord has made; we will rejoice and be glad in it - Psalm 118:24. Join with us every Sunday morning at 11am to hear more about God's unfailing love and promise

Westhay School Rooms

The chairman Tony Moss, reported that all events held in 2023 were appreciated by those who attended.

Again our wall was damaged by a car driving into it; despite giving the police details, including a picture of the car driving away clearly showing it's registration number, a website search showed that the car did not have an MOT certificate, which means that it was uninsured; yet the police failed to take any action.

The old School Clock has been restored to working order, to mark the Coronation of King Charles III. Also the toilets and kitchen have been repainted and the floor in the hall has been sanded and resealed.

It was also reported that the sum of £469.00 was donated during the year to various charity's, from Café Westhay, the Coronation Tea and the Carols & Christmas music.

Richard Brown - Secretary.

Terry Rendell

(Established ~ 1974)

Quality Painting & Decorating

For Exterior, Interior, including:
Wallpapering, Coving, Glazed Tiling

Clean Reliable, Prompt, Punctual and Thorough!

01458 834063

16 Bath Close Glastonbury BA6 9BJ

Westhay Moor Peatland Restoration Project

Somerset Wildlife Trust has been carrying out work at Westhay Moor National Nature Reserve to restore areas of the remaining peatland habitat there.

For centuries, the Levels and Moors have been drained to reclaim the land and to use the peat for fuel, compost or farming. Unfortunately, this means that the remaining peat has lost its ability to hold on to water well, a bit like the compost of a neglected house plant – if it's not watered for a while the water just runs off, and doesn't soak in. At nature reserve scale, this means that conditions across much of the reserve are simply too dry for rare and specialist peatland species that are clinging on rather than thriving.

Trees, scrub and bracken on peat are all signs that the peat is too dry to be a peat bog. What's more, in areas where we want to have that open bog habit, they make the situation worse. First, they act as water pumps, drawing water out of the ground and transpiring it to air. Second, the canopy acts like an umbrella stopping rain from reaching the ground and shading out peatland species like *Sphagnum* moss and the carnivorous sundew.

So with this restoration project, these damaging types of vegetation have been removed from parts of the reserve, and then groundworks completed to get the peat absorbing water again. Rewetting the peat involves digging a trench down past the dried out upper layers to healthier, wet peat below. The peat is then turned over and compacted back into the trench to block up the drainage features in the trench walls. At ground level, small surface bunds have been made to capture rainwater, so that it can filter down into the ground rather than run off into a ditch.

It will take a few years and maybe some tweaks for the peat to rewet and habitat to thrive, but the early signs show promise. Find out more about the project at:

Westhay Moor Peatland Restoration Project | Somerset Wildlife Trust

Siân Russell
Somerset Peatland Partnership Coordinator

Bell Ringers

Have you ever thought about taking up bell ringing?

It's a great thing to do and has many benefits: it's contributing to the community; it's acquiring a new skill; it's working as a member of a team; it's meeting new people; and it's great fun.

So how do you get started?

A few people expressed an interest in learning to ring at the 700 celebrations at St Mary's Church back in October. A new bell ringing centre has been opened at **The Bell Ringing Centre** at Holy Trinity Church, Street so me and Kevin Turland decided to give it a go. I have come from a family of bell ringers in Meare but never expressed an interest in learning as a teenager like my brothers and cousins did.



The trainers at The Bell Ringing Centre, Bev and Les Perry, are highly experienced bell ringers and are fully qualified to teach their art. There is a lot to learn but they are extremely encouraging, give freely of their time and know how to develop skills and confidence in manageable stages. They are very flexible with timings to meet each week, during the day or evenings.

Overall, bellringing is not a question of strength but of timing, feel and stamina. Thanks to the training Kevin and I have received through the centre we are now at the stage whereby we can ring to a basic standard and by Easter we hope to be able to ring in local church towers, including St Mary's and we are looking forward to becoming fully-fledged bell ringers in due course.

We have six bells at St Mary's so we would love others to learn with us to increase our team. So please get in touch. We'd love to hear from you. Ring me Rachel on 07947 049189

Thanks Rachel Robinson (Bell Ringing Learner)

FIND PEACE OF MIND

Personal Finance
for the Life you Desire

A fresh approach to financial planning, we work with you to design and deliver the lifestyle you desire.

As experienced independent financial planners, we have the expertise and insights to identify the best financial strategies to meet your requirements, but more than that we help you to think differently.

Contact us to arrange your no-obligation discovery session, or learn more at www.findpeaceofmind.co.uk.



Our Services:

- Property Finance
- Financial Reviews
- Retirement Planning
- Later Life Planning

Providing Independent advice on:

- Residential Mortgages
- Development Finance
- Buy to Let
- Secured Lending

Glenmoor, Park, Pitney, Somerset, TA10 9AU • T: 01749 676625
info@findpeaceofmind.co.uk • www.findpeaceofmind.co.uk

Find Peace of Mind Limited is authorised and regulated by the Financial Conduct Authority with reference 510117
 Registered as a Limited Company in England and Wales No. 06404471 at: Glenmoor, Park, Pitney, Somerset, TA10 9AU

Bubbles & Suds

- Window Cleaning
- Conservatory Cleaning
- Fascia & Soffit Cleaning
- Gutter Clearance
- Solar Panel Cleaning

01458 258188



info@bubbles-and-suds.co.uk
www.bubbles-and-suds.co.uk



Purely Probate

SOLICITORS

“We would not hesitate to recommend Purely Probate to anyone who is looking for professionalism coupled with real human warmth and empathy”

Graeme, Somerset

Judith Derbyshire 01458 850 146

jd@purelyprobate.co.uk

www.purelyprobate.co.uk

Welcome to
WILLOW TREE FARM

Luxury Country Estate For Hire

Contact: somersetholidayhomesuk@gmail.com

We can accommodate

- anniversaries
- gatherings
- retreats
- baby showers
- hen parties
- reunions
- birthdays
- private dining
- team building
- cookery classes
- product launches
- weddings

and much more!

www.somersetholidays.org

Clerks Report

Villager of the Year

There are many people who steadfastly work quietly away to ensure that tasks in and around Meare and Westhay are completed. Others dedicate many hours of their time to ensure that the organisations and activities of the parish continue to the benefit of others. Some people are simply great neighbours, looking out to the needs of the elderly and infirm, providing care support, running errands or simply being there with a shoulder to cry on. Why not acknowledge the enormous value of those who do so much for our parish and nominate them for the Villager of the Year award. There are a few guidelines and rules to follow when nominating someone. They are:

Nominated people must live in the Parish.

Councillors cannot be nominated.

The award is for an individual, not an organisation or business.

Applications are to be supported by a short statement as to why this person is considered worthy of an award.

To nominate someone for this award, send an email to the Parish Clerk at the following address - clerk@meare-pc.gov.uk by Friday 5th April 2024. All nominations will be considered in confidence and the winner will be announced after Councillors have considered all applications received.

Go on, make someone's day, you know they deserve it!

Summary of parish survey responses

A return of almost 40% to our parish survey is in community development circles considered to be very high. The Parish Council again expresses their gratitude to all who responded. I suspect what you really want to know is what did people say?

Parish Magazine. Respondents by an enormous majority informed that basically, you like the current format, the regularity of distribution, colour covers with the remainder being black and white. 9% of respondents favour an electronic version – a good time to remind you that the magazine is also on the parish council website. Many suggestions were forthcoming on content, with lots of you wanting regular articles included on the clubs, societies and organisations in the

village. One for the editorial team to ponder! An enormous 80% of respondents use the magazine to find a tradesman. **Those of you considering advertising – take note!**

Village Hall. 96% of respondents know that there is an intention to build a new hall. Question I asked for a response to the statement that the Parish of Meare needs a new village hall. 69% agreed or strongly agreed to that statement with just 7% disagreeing or strongly disagreeing. Many would like to see sports changing facilities in the village, which endorses the support shown for sports, particularly football and cricket. 89 respondents asked for Exercise Classes, with a further 51 asking for Dancing Classes. Of interest, is the fact that 23 people provided their contact details and have offered to help the Village Hall Trustees with building a new hall. You are wanting a commercial kitchen, a small committee room and a bar. This information has been forwarded to the Village Hall Trustees, which will no doubt provide guidance to the decisions they are now making.

Housing Needs. The majority of respondents live in detached houses, built in the 20th century. The majority of people simply love living in the Parish of Meare, with many of you expressing either the need for housing to accommodate young people looking to live independently, or for older people who want to downsize and remain in the parish.

Question 21 asked ‘If a need is identified, would you support a small development of housing for people local to the Parish of Meare?’ 49% of respondents replied - Yes, with a further 38% responding – Maybe.

Of interest was the responses to **question 7** -Why did you move to the Parish of Meare? To be closer to family and work were the main reasons given, affordability, rural location, proximity to education were also mentioned. One of the top comments of the survey was the respondent who wrote - “We had never heard of Meare when we had to relocate because of redundancy and new jobs – Lady Luck shone on us when we moved, no better community would you want to live in”.

The Parish Council will consider how best to process the information provided. The full results are on the parish website.

Gerard Tucker, Clerk – Meare Parish Council

Local Electrician & Plumber

Aspect Property Maintenance

Available 24 Hours A Day

Mechanical

Electrical

Plumbing

Heating

Visit Our Website For A FREE Quotation



www.aspectpropertymaintenance.co.uk

Info@aspectpropertymaintenance.co.uk

Emergency Call Out 07741439022

Village Hall Committee

By the time you read this we will have had a transitional AGM after which we will be holding bi-monthly public meetings and a main AGM on the 3rd September in the Community Church.

We have been busy getting our paperwork in order and writing policies so that all is up to date in accordance with the charity commission regulations. Our committee is growing and we welcome anyone who wishes to work with us.

Fundraising: we have held a quiz and a table top sale and more events are planned including a dog show and have-a-go-agility at a country fair on Herbies Field 12th May and a strawberry fair and car boot sale in July. We are collaborating with other fundraising groups in the village to hold bigger events in the future. Don't forget to use <https://www.easyfundraising.org.uk/> when doing online purchases and sign up to support us, its free. Rosie Lander

Ladies Group

The Group says a sad farewell to our very much loved member and friend Carol Brown. Her smile and kindness will be missed by all and our thoughts go out to her family.

Afternoon Tea

We have also added a little something extra to the calendar with an Afternoon Tea to be held in the Church Rooms on Wednesday 10th April at 2.00 pm. All are welcome and donations will be shared with Macmillan Cancer support, so please let friends and neighbours know about it.

Summer Coach Trip

Don't forget to sign up to the coach trip to Lynton & Lynmouth on Thursday 20th June. We still have plenty of seats left, so please let me know if you want to come along. As this involves a big outlay to hire the coach, we need *full payment* by the time of our AGM (and Bingo!) on Thursday 18th April. Partners and friends are welcome, the cost is *£20 per person*. Seats will be allocated on a first come, first served basis, so please let us know as soon as possible if you would like to be included. Payment by bank transfer in the usual way with your name as reference or in cash at the AGM.

Mrs Diana Monk

MSSCh, MBChA

**VISITING
CHIROPODIST**

PODIATRIST

01458 851255

Registered with the
Health Professions Council



N Duckett Tree Surgery

Specialising In Tree Surgery

- ⌚ All aspects of tree work undertaken
- ⌚ Fully Insured
- ⌚ 11 Years' Experience
- ⌚ Felling, Reduction And Removal Of Trees
- ⌚ Hedge Cutting
- ⌚ Garden Clearance

07792042388

www.nduckett-treesurgery.co.uk
sales@nduckett-treesurgery.co.uk

JUMP Certified
B
Company



**BROCHURES,
NEWSLETTERS
& FLYERS**



**BUSINESS
STATIONERY &
ENVELOPES**



**BOOKS &
BOOKLETS**



**PRODUCT
PACKAGING
& LABELLING**



**DIRECT MAILING
SERVICES**



**COPYING,
MANUALS &
DATA SHEETS**



**CATALOGUES
& PROSPECTUS**



**GRAPHIC DESIGN
& BRANDING**

As of April, **Walton Press** has now officially merged with **Jump!**
Whilst we have been acquired by **Jump** since 2019, we felt that
renaming would benefit the company and our customers...

This merger will allow us to provide you with even better service and
more resources to meet your printing needs. At the same time,
Walton Press and **Jump** have been working towards a sustainable
future, spearheading the movement for socially and environmentally
responsible printing.

For more info, please find us on:

WWW.JUMPP.COM/WALTON-PRESS-MERGER
01458 832829
SOMERSET@JUMPP.COM

Paw Prints Cattery



"Home from Home"

At The Mallards, Edington Road,
Burtle, Near Bridgwater, TA7 8NX

Tel: 01278 722252

www.pawprintscattery.co.uk

Email: pawprintscattery@ymail.com

Fully licensed & choice of
luxury large heated chalets

Cat loving family run
FAB management trained

Quiet country location &
flexible opening hours

Collection and delivery service available

Parking at Westhay Moor Nature Reserve

Westhay Moor National Nature Reserve (NNR) is available all year round for visitors to enjoy walking trails, bird watching, and geo-caching. Located in the centre of the Avalon Marshes, the reserve is home to diverse species including otters, bitterns, great white egrets, marsh harriers, and adders.

Unfortunately, **the costs of maintaining places like Westhay are increasing every year.** Somerset Wildlife Trust recently shared that it costs the charity over £803,000 a year to manage their nature reserves. As a result, the Trust made the decision to **start charging a very small parking fee at Westhay, which came into effect on 12th January 2024.**

Visitors to Westhay will now need to pay **£3 per visit** when using the car park. **Season tickets are also available**, costing £65 for an annual pass or £40 for a 6-month pass.

Somerset Wildlife Trust has introduced this charge to allow it to continue carrying out **the crucial conservation work needed at Westhay**, so visitors and supporters can continue to enjoy it.

The Trust would like to remind all visitors to always be respectful when parking, and never to block gateways, which are in constant use by local landowners, and it would like to thank its supporters for their patience while this new charge was being introduced.

St. Mary's Church

Happy Eastertide to everyone. We celebrate Easter with flowers and a Thanksgiving service on Sunday on 31st March and Holy Communion on Sunday 7th April at 11.00am.

We aim to leave the church open in the day time if possible, during the summer months but are dependant on just two regular key holders.

We would welcome some extra people to join the rota for opening up the church and also for helping with a spring clean!

Contact Hilary Sage 01458 860197

Somerlap
Est. 1981

Quality Garden Products

Decking | Fencing | Furniture | Gates | Sheds & Garden Buildings

BUY
ONLINE &
INSTORE



www.somerlap.co.uk | 01278 641671

Wells Road, Mark, Somerset TA9 4NR |



THE DAIRY
AT WESTHAY
EST. 2021

**FARM
FRESH
MILK**

Gently pasteurised daily, our whole milk is super fresh and full of natural flavour. The milk, along with reusable glass bottles, is available to buy from our vending machines which take cash or contactless card payments.

MILK - CHEESE - BUTTER - EGGS - MILKSHAKE
New House Farm, Burtle Road, Westhay,



Find us at the Avalon Marshes Centre.

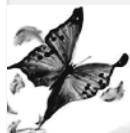
Open 10am to 5pm seven days a week

Offering drinks, breakfast, home made cakes, cream teas, sandwiches, baguettes, paninis & breakfast baps

Ring and Book for our delicious Cream Teas

Ring **07727257798**

The Marshes Tea stop is part of Cherished Events Catering



Cherished Events Catering

A family run, unique and individual catering service. Offering buffets & hog roasts

07727257798

info@marsheshubteastop.co.uk

Cheishedeventscatering@hotmail.com

Halls and Meeting places

Westhay School Rooms.

The Schoolroom consists of a main hall, a kitchen & small meeting room.

The cost of hire is £9.00 per hour, this includes electricity, the use of the kitchen and crockery, also the use of table and chairs.

For bookings and further details contact Anne Moss. tel. 01458. 860853 or Secretary, Richard Brown. e-mail. richardbrown5069@btinternet.com



The Muddy Lane Playing Fields.

For all enquiries including bookings please email the Parish Clerk, Gerard on clerk@meare-pc.gov.uk. He will reply as soon as he can.

Meare Church Rooms



<p>Session Times 8am – 1pm 1pm – 6pm 6pm – 11pm £30 Per Session 7 Days a week</p>	<p>Available for private hire or community events Please call Janice Bradley on 01458 860597 Or email Janice.Bradley3@BTInternet.com</p>
<p>Hall Address The Church Rooms St Mary's Road Meare Somerset BA6 9PU</p>	<p>Post Office opening times Friday 9.30am – 12:30pm</p> <p>Also used for voting</p>

Allotments

You must be a member of the parish to have an allotment subject to availability. Located at the end of Bramble Close. Yearly membership is £10 & rent £20 pa. Please Contact John Shaw on (01458 860040) or email him using, Johnshaw59@btinternet.com

**WANTED
VINYL
RECORDS**

**CASH PAID
TEL: 07745 599522**



Meare Community Church

Contact
Maggie
Ludbrook on
07943445676



Useful Contact details

Childline	0800 1111
Domestic Violence Hotline 24 hours	0800 2000247
Highways Faults (Mon-Fri 8am-6pm)	0300 1232224
Library Service Outreach Officer Lauren Davis, Email Lauren.davis@somerset.gov.uk	07814079831
Little Starlings Pre-School Meare, littlestarlingsmeare@outlook.com	01458 781595
Meare Village Primary School	01458 860228
Somerset Council	0300 1232224
Mind email info@mindinsomerset.org.uk or ring	01749 233115
St Mary's Church Mon-Fri 09.00 - 13.00	01458 834281
Parish Paths Liaison Officer	01458 860537
Police non-emergency	101
Samaritans	116 123
Street Light Faults (emergency only 03457959639)	0345 6010939
The Bird Pub, Westhay	01458 784371
The Railway Inn, Meare	01458 741428
Western Power (For Power Cuts)	0800 6783105
Village Poppy Appeal Charlotte/Elizabeth	01458 860865
Knights Pharmacy, Feversham Lane, Glastonbury, BA6 9LP, Mon. -Fri 8:00am- 6:30pm, Sat 9am - 3 pm, closed Sunday. 01458 834986	
Street Recycling site Mon till Wed 9 till 5, Sat & Sun 9 till 4	
Parish Council Chairperson & Parish Clerk, Visit www.meare-pc.gov.uk for full list of Parish Councillors	
Chairperson Chris Bennetts	Crysnal, Westhay BA6 9TN Cllr.bennetts@meare- pc.gov.uk 01458 860393
Gerard Tucker Parish Clerk	Langata, High Street, Aller, TA10 0QN clerk@meare- pc.gov.uk 078543 79938

Shipham - Street Bus 668				
Shipham The Miners Arms (W-bound)	07:25	10:00	13:00	15:50
Cheddar Tweentown (E-bound)	07:33	10:08	13:08	15:58
Cocklake The Post Office (S-bound)	07:42	10:17	13:17	16:07
Wedmore The Mall (S-bound)	07:46	10:21	13:21	16:11
Mudgley Mudgely Cross (SE-bound)	07:50	10:25	13:25	16:15
Westhay Turnpike House (S-bound)	07:55	10:30	13:30	16:20
Westhay The Post Office (SW-bound)	07:56	10:31	13:31	16:21
Meare, opp Millbatch	07:58	10:33	13:33	16:23
Meare Post Office (near)	07:59	10:34	13:34	16:24
Meare, outside St. Mary's Church	07:59	10:34	13:34	16:24
Stileway Bus Shelter (E-bound)	08:00	10:35	13:35	16:25
Brindham Community Hospital (S-bound)	08:07	10:42	13:42	16:32
Glastonbury Chinnock Road Spar Shop (W-bound)	08:09	10:44	13:44	16:34
Glastonbury Town Hall (S-bound)	08:14	10:49	13:49	16:39
Street Strode College (E-bound)	08:22			
Street Crispin Hall (NW-bound)	08:25	10:57	13:57	16:47
Street Sainsburys (NE-bound)	09:30	11:02	14:02	
Street - Shipham Bus 668				
Street Sainsburys (NE-bound)	08:50	11:25	14:30	
Street The Library (SE-bound)	08:55	11:30	14:35	17:00
Street Strode College (E-bound)				17:05
Glastonbury Town Hall (N-bound)	09:05	11:40	14:45	17:13
Glastonbury The Queen's Head (E-bound)	09:06	11:41	14:46	17:14
Glastonbury Chinnock Road Spar Shop (E-bound)	09:10	11:45	14:50	17:18
Brindham Community Hospital (N-bound)	09:12	11:47	14:52	17:20
Meare Rice Farm (NW-bound)	09:17	11:52	14:57	17:25
Stileway, opp Bus Shelter	09:18	11:53	14:58	17:26
Meare, opp St Marys Church	09:19	11:54	14:59	17:27
Meare, opp Post Office	09:20	11:55	15:00	17:28
Meare, adj Millbatch	09:20	11:55	15:00	17:28
Westhay, opp The Post Office	09:22	11:57	15:02	17:30
Westhay Turnpike House (N-bound)	09:23	11:58	15:03	17:31
Mudgley Mudgely Cross (N-bound)	09:27	12:02	15:07	17:35
Wedmore The Borough Yard (N-bound)	09:32	12:07	15:12	17:40
Cocklake The Post Office (N-bound)	09:35	12:10	15:15	17:43
Cheddar Tweentown (W-bound)	09:44	12:19	15:24	17:52
Shipham The Miners Arms (NE-bound)	09:52	12:27	15:32	18:00

Magazine Dates & Contact Information

The magazine is also available on the Parish Council Website, together with other Parish News, visit: www.meare-pc.gov.uk.

Articles and advertising can be either emailed to Caroline Sanderson (editor) at MeareandWesthay@gmail.com or ring on **01458 860295** or post to South View Farm, Chapel Lane, Meare BA6 9TJ.

The Magazine is delivered to 654 homes in the Parish every 2 Months and everyone is welcome to contribute to the magazine. However any views or comments expressed are those of the individual contributor and do not in any way reflect the opinion of the editor or the Parish Council and the editorial team reserve the right to amend, edit or omit any article or contribution in the interest of legality, public decency, availability of space or any other reason. **Material received after the deadline may not be included.**

Below at details of the next 2 issues

Next Issues	Deadline	Distribution
June / July	1st May 24	1st June 24
Aug / Sept	1st July 24	1st Aug 24

Rates are £ per annum for 6 copies
Outside Back Cover (Colour) Not currently available 1/8 page £36.00 per year 1/4 page £66.00 per year
Inside Front or Back Cover (Colour) Currently not available 1/8 page £33.00 per year 1/4 page £60.00 per year
Inside pages (black and white) 1/8 page £27.50 1/4 page £49.00 1/2 page £92.00 Full page £180.00
Middle page (Colour only) Currently Not Available. 1/8 page £36.00 1/4 page £66.00 1/2 page £115.00

Haircuts at Home
by Sam
Mobile Barber

Days, evenings and weekend appointments available.

I cover Wedmore, Cheddar, Mark and close surrounding areas.

Prices
Gents cut £15
OAP's £12
Clipper cuts £12
Children 4 and under £8
Children age 5-11 £10
Ladies (basic trims only) £15

Call or text to book an appointment
07870 500828
Cash or bank transfer accepted

Registered Osteopath

Matthew Jackson

BSc (Hons) Ost, Dip Ac/CHM (China),
Pg Dip CHM (Gynaecology and Obstetrics),
MRCHM

Also specialising in Acupuncture
& Herbal Medicine

Clinics in
Glastonbury Surgery and
The Vine Surgery, Street

**Appointments:
01458 860392**

Email:
info@somersethealthpractice.co.uk
www: somersethealthpractice.co.uk

lottymerry.com

Bowen Therapy



Hypnotherapy

Helping *your* Mind & Body to
regain balance and function

Pain, Discomfort, Limited Movement Anxiety
Stress, Depression, Phobias, Fears
Confidence & Self Esteem
Rider confidence

Equine Bowen Therapy

Treating Horses with
Pain, Discomfort, Movement issues
Wounds, Respiratory problems
Refusing to jump, Rearing/Bucking
Muscular tension, Mystery Lameness

...
Specialising in Horse & Rider
If one of you is wonky, the chances
are you both will be ...



Bowen helps you both work together again

Lotty Merry – 07966 473238
new clinic in MEARE



GROUNDWORKS & CONSTRUCTION CONTRACTOR



Concrete Finishing



Construction

Groundworks

CONTACT US FOR AN ON-SITE ASSESSMENT



Tel: 07825941102



info@ecorfieldgroundworks.co.uk / www.ecorfieldgroundworks.co.uk

Piano Lessons

CREATE MUSICAL FOUNDATIONS FOR LIFE

I'M A CLASSICAL, FRIENDLY, STUDENT CENTERED PIANO TEACHER IN MEARE. CLASSES HAVE AN EMPHASIS ON AURAL SKILLS AND HAPPINESS. CHILDREN (AGE 4+) AND ADULTS OF ANY STANDARD WELCOME. REFERENCES AVAILABLE.

WITH TESSA WILLS
07966287092

DAVE STOCKMAN
Property and Garden Maintenance
 All work considered. No job too small
Tel: 07932602470
 Email:
d.stockmanservices@outlook.com

F STILLWELL & SONS LTD
Building Contractors
Plumbing and Heating Engineers
 16 Glastonbury Road, Meare,
 Nr. Glastonbury, Somerset, BA6 9SN
Tel 01458 860280 / 860679
www.fstillwellandsons.co.uk

Stanley C Baker & Sons Ltd
Building Contractors
 01458-860555
www.scbakerandsons.co.uk
 THE SAWMILLS . WESTHAY . GLASTONBURY




Raising Standards. Protecting Homeowners

HARTS 
Natural Seafoods Ltd.
Fishmongers at Glastonbury Market
Every Tuesday
 07976-353245
www.hartsnaturalseafoods.com

C. Willcox
General Garden Service

- Lawn cutting
- Weeding
- Hedge trimming
- Garden clearance etc

Tel: 01458 442994
Mob: 07880926872

CHALICE 
 FOOT HEALTH

TREATMENTS FOR

- Corns
- Callus
- Ingrowing toenails
- Fungal infections
- Verruca
- Cracked heels
- Toenail cutting
- Fingernail cutting

FRIENDLY FOOT CARE IN THE COMFORT OF YOUR OWN HOME

CALL 07835 592111 OR
 EMAIL emma@chalicefoothealth.co.uk


Ben Parsons
 PAINTING & DECORATING

 07827 297247
 b.pdecorating@hotmail.com
 Free Interior and Exterior Quotations